

# XML in Application

Eric C. Kansa

UC Berkeley / OpenContext.org



Unless otherwise indicated, this work is licensed under a Creative Commons Attribution 3.0 License <<http://creativecommons.org/licenses/by/3.0/>>

“How I learned to  
stop worrying  
and love the  
Web (and XML)”



## Welcome to Open Context

Open Context reviews, edits, and publishes archaeological research data and archives data with university-backed repositories, including the California Digital Library.

Donate

Make a donation or volunteer services



### Data Sharing as Publication

- Started in 2007
- Open data (mainly CC-BY)
- Archiving by California Digital Library
- Part of a broader reform movement in scholarly communications

## DIPIR (<http://www.dipir.org>)

- 3-Year project, Oct. 2010-Sept. 2013
- National Leadership Grant from the Institute for Museum and Library Services (LG-06-10-0140-10)
- Ixchel Faniel (PI), Elizabeth Yakel (Co-PI)



Raw Data Can Be Unappetizing



# DIPIR: Data Documentation Practices

I use an Excel spreadsheet...which I ... inherited from my research advisers. ...my dissertation advisor was still recording data for each specimen on paper when I was in graduate school so that's what I started ...then quickly, I was like, "This is ridiculous."... I just started using an Excel spreadsheet that has sort of slowly gotten bigger and bigger over time with more variables or columns...I've added ...color coding...I also use...a very sort of primitive numerical coding system, again, that I inherited from my research advisers...So, this little book that goes with me of codes which is sort of odd, but **...we all know that a 14 is a sheep.**" (CCU13)



**A long way to go before we get usable, intelligible data**





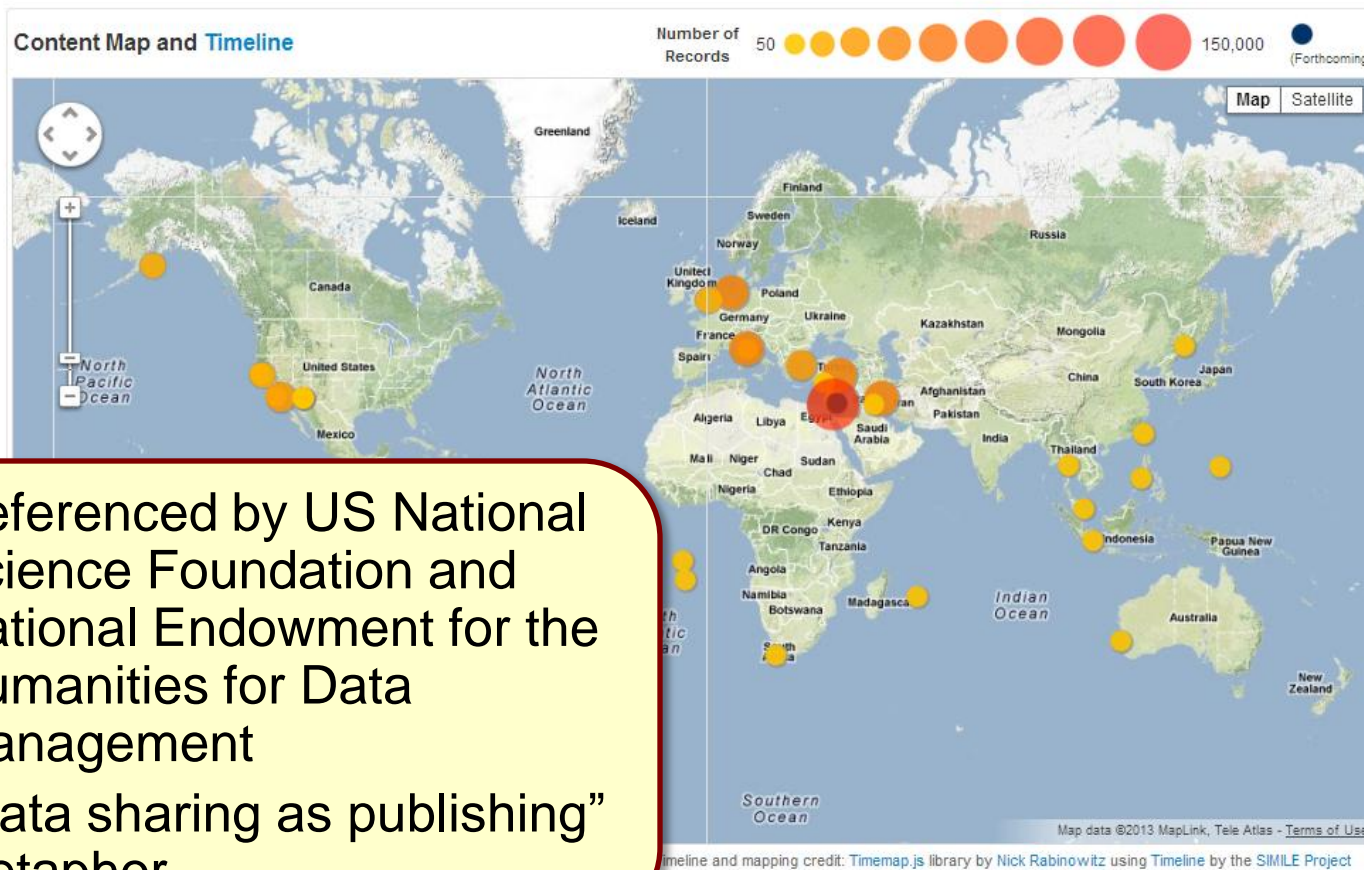
**Sometimes data is better served cooked**

## Welcome to Open Context

Open Context reviews, edits, and publishes archaeological research data and archives data with university-backed repositories, including the California Digital Library.

Donate

Make a donation or volunteer services



1. Referenced by US National Science Foundation and National Endowment for the Humanities for Data Management
2. “Data sharing as publishing” metaphor



## Projects and Collections

Each project represents a specific study or research effort conducted by a single investigator or a team of collaborating investigators. The data and documentation presented in a project can be freely used and referenced by the research community and public for re-analysis, comparison with other collections, visualization, or other applications provided data contributors are properly credited with citation.

Open Context currently publishes 29 projects.



**Mikt'sqaq Angayuk Finds**  
Finds catalog from Mikt'sqaq Angayuk, an historic Alutiiq settlement of the early 19th century, Alaska

Project	Editorial Status	Description	Primary People	Keywords
<a href="#">Mikt'sqaq Angayuk Finds</a>	★★★★☆	Finds catalog from Mikt'sqaq Angayuk, an historic Alutiiq settlement of the early 19th century, Alaska	Amy V. Margaris, Fanny Ballantine-Himberg, Mark Rusk, Patrick Saltonstall	Alaska, Alutiiq, Kodiak, Russian colonialism, trade, subsistence
<a href="#">Asian Stoneware Jars</a>	★★★★☆	Element composition of Asian Stoneware Jars from the 9th - 19th centuries CE	Peter Grave	
<a href="#">Zooarchaeology of Öküzi Cave</a>	★★★★☆	Animal exploitation patterns in SW Anatolia during the Epipaleolithic from assemblages excavated from a finely-stratified cave	Levent Atici	
<a href="#">Zooarchaeology of Karain Cave B</a>	★★★★☆	Changes in hunter-gatherer lifestyles that may have led to sedentary agricultural economies in SW Anatolia	Levent Atici	
<a href="#">West Stow West Zooarchaeology</a>	★★★★☆	West Stow, Suffolk County, UK Rescue excavations conducted at the site in advance of the construction of a new Visitor Centre	Pamela Crabtree	

- 38 projects currently published (with varying degrees of comprehensiveness)
- 38 different schemas and many different vocabularies (few “standards” in archaeology)


**Project: Asian Stoneware Jars**

Element composition of Asian Stoneware Jars from the 9th - 19th centuries CE

Number of Views: 363

## Project / Collection Overview

**Introduction**

Asian production and trade in plain and decorated porcelain tablewares become increasingly prominent in the Asian and later international maritime economy from as early as the 9th century CE. One of the less well understood aspects of this trade was the production of large stoneware jars. This project seeks to elementally characterize a wide and diverse range of these jars using inductively coupled plasma optical emission spectrometry (ICP-OES) and neutron activation analysis (NAA), and proton-induced X-ray and γ-ray emission spectrometry (PIXE-PIGE) to better understand likely provenance as well as production dynamics over this period.

**Project Editorial Status**

●●●○○ Managing editor reviewed

**Suggested Citation**

Peter Grave. "Asian Stoneware Jars: (Overview)" (Released 2013-03-07). Peter Grave (Ed.) Open Context.  
 <<http://opencontext.org/projects/4B16F48E-6F5D-41E0-F568-FCE64BE6D3FA>>  
 DOI: [10.6078/M7057CVH](https://doi.org/10.6078/M7057CVH)

**Project Editorial Status**

●●●○○ Managing editor reviewed

**Suggested Citation**

Peter Grave. "Asian Stoneware Jars: (Overview)" (Released 2013-03-07). Peter Grave (Ed.) Open Context.  
 <<http://opencontext.org/projects/4B16F48E-6F5D-41E0-F568-FCE64BE6D3FA>>  
 DOI: [10.6078/M7057CVH](https://doi.org/10.6078/M7057CVH)

**Browse this Project**

**Philippines**

 402 items contained in this context.  
 Dating between: 960 to 1600

**Northern Mariana Islands**

 158 items contained in this context.  
 Dating between: 1638 to 1638

**Malaysia**

 111 items contained in this context.  
 Dating between: 1370 to 1830

**South Africa**

 66 items contained in this context.  
 Dating between: 1630 to 1750

**Mauritius**

 62 items contained in this context.  
 Dating between: 1609 to 1629

**Australia**

 61 items contained in this context.  
 Dating between: 1629 to 1727

**Indian Ocean**

 33 items contained in this context.  
 Dating between: 1615 to 1615

location data should account for these inaccuracies.

**Related References**

Grave, Peter, and Maccheroni, Michael

2009

Characterizing Asian Stoneware Jar Production at the Transition to the Early Modern Period, 1550-1650. *Scientific research on historic Asian ceramics: proceedings of the Fourth Forbes Symposium at the Freer Gallery of Art*. edited by Blythe Ellen McCarthy, pp. 186-204. London, Archetype Publications in association with the Freer Gallery of Art, Smithsonian Institution.

[\[WorldCat\]](#) [\[Open Access\]](#)


**Project: Archaeology of Mesoamerican Animals**

Datasets and media with 'The Archaeology of Mesoamerican Animals' (Lockwood Press)

Number of Views: 50

## Project / Collection Overview

**Introduction**

This represents a forthcoming publication of datasets and other media that will supplement some chapters of *The Archaeology of Mesoamerican Animals*, an edited volume to be published with [Lockwood Press](#).

**Book Reference**

Götz, Christopher M., and Kitty F. Emery (Editors)

In press *The Archaeology of Mesoamerican Animals (La arqueología de los animales de Mesoamérica)*, Atlanta, GA, Lockwood Press.  
[\[Abstract\]](#)

**Book Abstract (from Lockwood's Website)**

Recognition of the role of animals in ancient diet, economy, politics, and ritual is vital to understanding ancient cultures fully, while following the clues available from animal remains in reconstructing environments is vital to understanding the ancient relationship between humans and the world around them. In response to the growing interest in the field of zooarchaeology, this volume presents current research from across the many cultures and regions of Mesoamerica, dealing specifically with the most current issues in zooarchaeological literature. Geographically, the essays collected here index the different aspects of animal use by the indigenous populations of the entire area between the northern borders of Mexico and the southern borders of lower Central America. This includes such diverse cultures as the Olmec, Maya, Zapotec, Mixtec, and Central American Indians. The time frame of the volume extends from the Preclassic to recent times. The book's chapters, written by experts in the field of Mesoamerican zooarchaeology, provide important general background on the domestic and ritual use of animals in early and classic Mesoamerica and Central America, but deal also with special aspects of human-animal relationships such as early domestication and symbolism of animals, and important yet otherwise poorly represented aspects of taphonomy and zooarchaeological methodology.

**Forthcoming Digital Content**

- **Chapter 1** Christopher M. Götz, *Digital Companion to 'Introduction'*. DOI: 10.6078/M71Z429Q
- **Chapter 2** Elizabeth S. Wing, *Digital Companion to 'Dog Remains from the Marismas Nacionales'*. DOI:10.6078/M7BG2KWR
- **Chapter 5** Tanya M. Peres, Amber M. VanDerwarker, and Christopher A. Pool, *Digital Companion to 'The Zooarchaeology of Olmec and epi-Olmec Foodways along Mexico's Gulf Coast'*. DOI:10.6078/M76Q1V5F
- **Chapter 8** Christopher M. Götz, and Travis W. Stanton, *Digital Companion to 'The Use of Animals by the Prehispanic Maya of the northern Lowlands'*. DOI:10.6078/M77H1GG5
- **Chapter 9** Marilyn A. Masson and Carlos Peraza Lope, *Digital Companion to 'Animal Consumption at the Monumental Center of Mayapán'*. DOI:10.6078/M76Q1V5F

**Project Editorial Status**

Forthcoming Placeholder

**Suggested Citation**

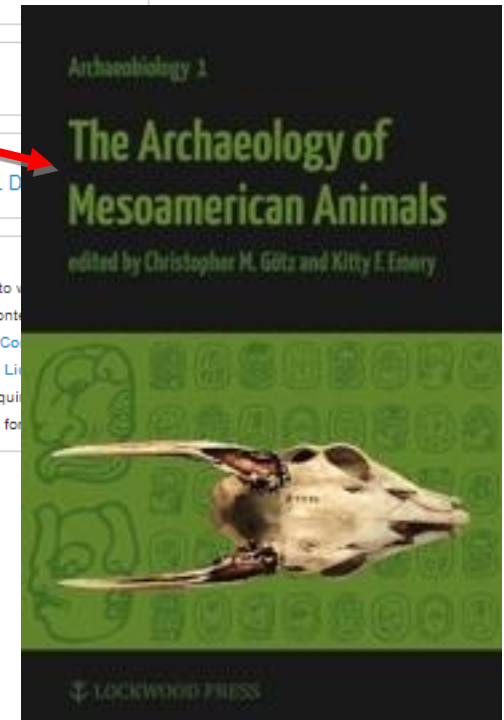
"Archaeology of Mesoamerican Animals: (Overview)" (Released 2013-06-05). Open Context. <<http://opencontext.org/projects/21A79037-01EA-4CBB-7048-6AA054FB4A0D>> DOI:10.6078/M7KW5CX5

**Browse this Project**

Project dataset is forthcoming, and not yet available to browse or use.

**Keywords for this Project**
**Linked Media (0 files)**
[Version-control \(Github, XML D](#)
**Copyright Licensing**

To the extent to which this content applies, this content is licensed under the following license(s):  
 with: [Creative Commons Attribution 3.0 License](#)  
 Attribution Required  
 and hyperlinks for more information






**Item: PC 20030129**
**Class: Objects**
**Project: Murlo**
**Number of Views: 177**

 Context (click to view): [Italy / Poggio Civitate / Tesoro / Tesoro32 / Tr-ID 509](#)
**Descriptive Properties (9)**

Variable	Value
Fabric Category	Bronze
Object Type	<a href="#">Costume, Accessories::Chain / Links</a>
Fragment Noted	false
Object Type (notes)	Bronze Link Bracelet
Size	Max. Pres. Diameter of Bracelet 0.075 m, Max. Pres. Diameter of Link 0.005 m
Condition	Bracelet is essentially intact with four associated detached portions of links. The surfaces of the links and clasps are distorted in color and wear due to corrosion and oxidation.
Description	A nearly intact bronze bracelet preserves 56 circular links, each composed of thin bronze wire coiled three times. The bracelet also preserves three longer "clasps" each composed of a length of wire bent in a lateral loop at one end, brought together and straightened, then curved back around vertically in a smaller double loop.
Fabric Description	Bronze
Munsell	Mottled - GLEY 5G 5/2 grayish green, GLEY 5G 7/2 pale green

**Item Notes**

The Poggio Civitate Excavation Project website originally included this object at this address:

<http://poggiocivitate.classics.umass.edu/catalog/viewartifactcatalog.asp?fid=PC2003012900>

**Linked Persons / Organizations (1)**

[Anthony Tuck](#), Director

**Project Editorial Status**

★★★★☆ Managing editor reviewed

**Suggested Citation**

Anthony Tuck. "Murlo: PC 20030129 (Objects)" (Released 2012-12-29). Anthony Tuck (Ed.) Open Context. <<http://opencontext.org/subjects/3B138F69-8A97-47F5-226A-070D24A6BB0B>>

**Editorial Description (1)**

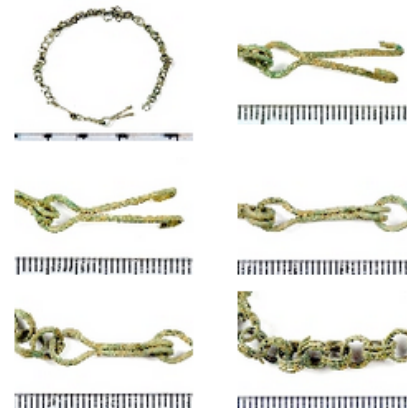
[\(700 BCE - 535 BCE\)](#)

**Editor's Note:** Date ranges are approximate and do not necessarily reflect the opinion of data contributors. These dates are provided only to facilitate searches.

**Linked Data:**

CIDOC-CRM-Consists of :: [British Museum Thesaurus- bronze](#)

CIDOC-CRM-Has type :: [British Museum Thesaurus- chain](#)

**Linked Media (16)**



**Item: F-7-2004-07-22**
**Class: Trench**
**Project: Kenan Tepe**
**Number of Views: 0**

 Context (click to view): [Turkey / Kenan Tepe / Area F / Trench 7](#) (linked item)

**Document Contents**

Area:F Trench:7,

July 22, 2004

Sibel Torpil / Eser Karaca

Today it is the last day of the season. Because of this reason we tried to hurry. Our first aim was to take out the mud-brick wall L7121 . We wanted to be sure on taken of the mud-brick wall L7121 was sitting on. We have taken of the mud-brick wall with trowels and we have observed that the wall was sitting on an ashy layer L7132. Besides these I have removed the oven L7124. Little amount of potsherds came out of it. The construction material of the oven seems to be highly burned. During removing and after sweeping the L7124 I was able to observe that the whole oven was located on an ashy layer . But this ashy layer is not the same as the one in L7132. This different ashy layer makes us think that there is no connection in between the oven L7124 and the so-called Late Chalcolithic house.

In addition to these I have opened two locia numbers. These two new locia members. These two new locia numbers belong to two pits which are sitting on L7126. But these two pits are to be investigated in the season of 2005.

All in all we have cleared and swept the entire trench, then I have taken the last photos of the trench, and by taking 42 elevations of the trench use have closed the trench for this season.

**Document Properties (2)**

Variable	Value
Date	<a href="#">2004-07-22</a>
Year	<a href="#">2004</a>

**Item Notes**

The purpose of the daily journal was to record the activities taking place in a trench each day. This included which loci were excavated, how and why loci were excavated and the ongoing impressions of the relationships among loci. It should be noted that journals record the actions, impressions and ideas of trench supervisors during the excavations. They are not, therefore, the final interpretations or syntheses of the emerging data.

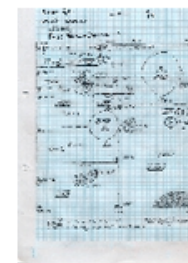
**Project Review Status**

★★★★★ Editorial board reviewed

**Suggested Citation**

Sibel Torpil, Eser Karaca. "Kenan Tepe: F-7-2004-07-22" (Released 2012-02-28). Bradley Parker, Peter Cobb (Eds.) Open Context. <<http://opencontext.org/media/14E826A9-A779-4094-AF8F-A9F8706983E9>>

**Linked Media (2)**

[2004-07-22](#)

[2004-07-22](#)
[ArchaeoML \(XML\) Version](#)
[Version-control \(Github, XML Data\)](#)
**Copyright Licensing**


To the extent to which copyright applies, this content is licensed with: [Creative Commons Attribution3 License Attribution](#)  
 Required: Citation, and hyperlinks for online uses.



Item: 20070199\_2009\_003.jpg

Class: Objects

Project: [Murlo](#)

Number of Views: 3

Context (click to view): [Italy / Poggio Civitate / Tesoro / Tesoro47 / Tr-ID 586 / PC 20070199](#) (linked item)

#### Media Preview



#### Project Review Status

★★★★☆ Managing editor reviewed

#### Suggested Citation

Anthony Tuck. "Murlo: 20070199\_2009\_003.jpg" (Released 2012-12-29). Anthony Tuck (Ed.) Open Context. <<http://opencontext.org/media/13AED501-A908-4FCF-83F1-470622DA4B19>>

#### Linked Media (0)

[ArchaeoML \(XML\) Version](#)

[Version-control \(Github, XML Data\)](#)

#### Copyright Licensing



To the extent to which copyright applies, this content is licensed with: [Creative Commons Attribution3 License](#)  
Attribution Required: Citation, and hyperlinks for online uses.

#### Media Properties (6)

Variable	Value
Title	Bone Inlay in the Shape of a Human Head
Primary photo	0
Photo type	1
Photo ID	<a href="#">24788</a>
Album ID	0
Description	This bone inlay preserves the full form of a human face and portions of the neck. The features of the face are as follows: a wide forehead; almond shaped protruding eyes with incised orbitals; a triangular pointed nose; prominent cheekbones; clearly defined straight mouth; and a narrow and pointed chin. The neck is flat and rectangular in cross-section. The top of the head is flat and set at a slightly angled plane. The back



<arch:spatialUnit xmlns:arch="http://ochre.lib.uchicago.edu/schema/SpatialUnit/SpatialUnit.xsd" xmlns:oc="http://opencontext.org/schema/space\_schema\_v1.xsd" xmlns:dc="

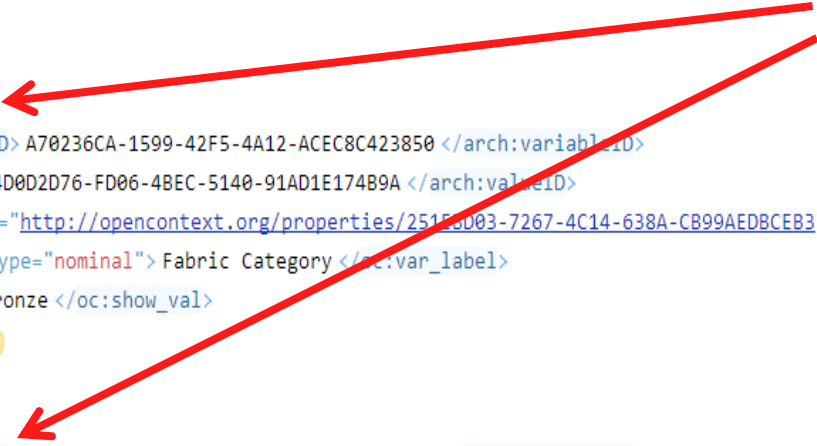
```
<arch:name>
  <arch:string> PC 20030129 </arch:string>
</arch:name>
▶ <oc:item_class>
▼ <arch:observations>
  ▼ <arch:observation obsNumber="1">
    ▶ <oc:obs_metadata>
      ▼ <arch:properties>
        <arch:property>
          <arch:variableID> A70236CA-1599-42F5-4A12-ACEC8C423850 </arch:variableID>
          <arch:valueID> 4D0D2D76-FD06-4BEC-5140-91AD1E17489A </arch:valueID>
          <oc:propid href="http://opencontext.org/properties/251EBD03-7267-4C14-638A-CB99AEDBCEB3"> 251EBD03-7267-4C14-638A-CB99AEDBCEB3 </oc:propid>
          <oc:var_label type="nominal"> Fabric Category </oc:var_label>
          <oc:show_val> Bronze </oc:show_val>
        ▶ <oc:linkedData>
          </arch:property>
        <arch:property>
          <arch:variableID> 7DB79382-7432-42A4-FBC5-EF760691905A </arch:variableID>
          <arch:valueID> 4161B46F-811D-4FD4-EB8C-0669D9020097 </arch:valueID>
          <oc:propid href="http://opencontext.org/properties/145500AA-77FF-4C1D-CF86-A075DCAAB43B"> 145500AA-77FF-4C1D-CF86-A075DCAAB43B </oc:propid>
          <oc:var_label type="nominal"> Object Type </oc:var_label>
          <oc:show_val> Costume, Accessories::Chain / Links </oc:show_val>
        ▶ <oc:linkedData>
          </arch:property>
        <arch:property>
        ▶ <arch:property>
        ▶ <arch:property>
        ▶ <arch:property>
        ▶ <arch:property>
        ▶ <arch:property>
        ▶ <arch:property>
        ▶ <arch:property>
        </arch:properties>
      <arch:links>
        <arch:docID type="resource" info="link"> 86E1590F-C568-4744-C0DB-407E8EECA449 </arch:docID>
        <arch:docID type="resource" info="link"> 279F9BAC-587A-4D16-CCF9-DA340A722773 </arch:docID>
```

## Global Schema

- “ArchaeoML” (Archaeological Markup Language)
- Developed at University of Chicago
- **Some common (but abstract) semantics**

```
<arch:name>
  <arch:string> PC 20030129 </arch:string>
</arch:name>
▶ <oc:item_class>
▼ <arch:observations>
  ▼ <arch:observation obsNumber="1">
    ▶ <oc:obs_metadata>
      ▼ <arch:properties>
        <arch:property>
          <arch:variableID> A70236CA-1599-42F5-4A12-ACEC8C423850 </arch:variableID>
          <arch:valueID> 4D0D2D76-FD06-4BEC-5140-91AD1E17489A </arch:valueID>
          <oc:propid href="http://opencontext.org/properties/251EBD03-7267-4C14-638A-CB99AEDBCEB3"> 251EBD03-7267-4C14-638A-CB99AEDBCEB3 </oc:propid>
          <oc:var_label type="nominal"> Fabric Category </oc:var_label>
          <oc:show_val> Bronze </oc:show_val>
        ▶ <oc:linkedData>
          </arch:property>
        <arch:property>
          <arch:variableID> 7DB79382-7432-42A4-FBC5-EF760691905A </arch:variableID>
          <arch:valueID> 4161B46F-811D-4FD4-EB8C-0669D9020097 </arch:valueID>
          <oc:propid href="http://opencontext.org/properties/145500AA-77FF-4C1D-CF86-A075DCAAB43B"> 145500AA-77FF-4C1D-CF86-A075DCAAB43B </oc:propid>
          <oc:var_label type="nominal"> Object Type </oc:var_label>
          <oc:show_val> Costume, Accessories::Chain / Links </oc:show_val>
        ▶ <oc:linkedData>
          </arch:property>
        ▶ <arch:property>
        ▶ <arch:property>
        ▶ <arch:property>
        ▶ <arch:property>
        ▶ <arch:property>
        ▶ <arch:property>
        ▶ <arch:property>
        </arch:properties>
      <arch:links>
        <arch:docID type="resource" info="link"> 86E1590F-C56B-4744-C0DB-407E8EECA449 </arch:docID>
        <arch:docID type="resource" info="link"> 279F9BAC-587A-4D16-CCF9-DA340A722773 </arch:docID>
```

**Attribute – Value Pairs (“Properties”)**



```
<arch:name>
  <arch:string> PC 20030129 </arch:string>
</arch:name>
<oc:item_class>
<arch:observations>
  <arch:observation obsNumber="1">
    <oc:obs_metadata>
      <arch:properties>
        <arch:property>
          <arch:variableID> A70236CA-1599-42F5-4A12-ACEC8C423850 </arch:variableID>
          <arch:valueID> 4D0D2D76-FD06-4BEC-5140-91AD1E17489A </arch:valueID>
          <oc:propid href="http://opencontext.org/properties/251EBD03-7267-4C14-638A-CB99AEDBCEB3"> 251EBD03-7267-4C14-638A-CB99AEDBCEB3 </oc:propid>
          <oc:var_label type="nominal"> Fabric Category </oc:var_label>
          <oc:show_val> Bronze </oc:show_val>
          <oc:linkedData>
        </arch:property>
        <arch:property>
          <arch:variableID> 7DB79382-7432-42A4-FBC5-EF700691905A </arch:variableID>
          <arch:valueID> 4161B46F-811D-4FD4-EB8C-0069D9020097 </arch:valueID>
          <oc:propid href="http://opencontext.org/properties/145500AA-77FF-4C1D-CF86-A075DCAAB43B"> 145500AA-77FF-4C1D-CF86-A075DCAAB43B </oc:propid>
          <oc:var_label type="nominal"> Object Type </oc:var_label>
          <oc:show_val> Costume Accessories::Chain / Links </oc:show_val>
          <oc:linkedData>
        </arch:property>
        <arch:property>
        <arch:property>
        <arch:property>
        <arch:property>
        <arch:property>
        <arch:property>
        <arch:property>
        <arch:property>
        </arch:properties>
      <arch:links>
        <arch:docID type="resource" info="link"> 86E1590F-C568-4744-C0DB-407E8EECA449 </arch:docID>
        <arch:docID type="resource" info="link"> 279F9BAC-587A-4D16-CCF9-DA340A722773 </arch:docID>
```

**Sometimes add additional semantics (referencing concepts / entities via URIs)**








**Item: Bone J8c22-31**
**Class: Animal Bone**
**Project: Zooarchaeology of Öküzini Cave**
**Number of Views: 5**

Context (click to view):

[Turkey / Öküzini Cave / VII / Square J8c](#)
**Descriptive Properties (23)**

Variable	Value
Archaeological Horizon	22
Osteo Id	Metatarsus III + IV
Taxonomic Id	<a href="#">Ovis orientalis</a>
Articulation	<a href="#">Separate</a>
Symmetry	<a href="#">Right</a>
Sex	<a href="#">Nonidentified</a>
Pathology	<a href="#">No pathology</a>

**Linked Data:**

Open Context Zooarchaeology Annotations-Has anatomical identification :: [UBERON \(Uber Anatomy Ontology\)- fused metatarsal bones 3 and 4](#)

Biological Taxonomy Vocabulary-Has Biological Taxonomy :: [Encyclopedia of Life- Ovis orientalis](#)

Open Context Zooarchaeology Annotations-Has fusion character :: [Open Context Zooarchaeology Annotations- Distal epiphysis unfused](#)

Depth of the medial trochlear condyle (B)	11.7
Greatest depth of the distal end (Dd)	17.5
Greatest breadth of the distal end (Bd)	27.2

**Linked Persons / Organizations (1)**
[Levent Atici, Principle Author / Analyst](#)
**Project Editorial Status**

★★★★★ Managing editor reviewed

**Suggested Citation**

Levent Atici. "Zooarchaeology of Öküzini Cave: Bone J8c22-31 (Animal Bone)" (Released 2013-02-27). Levent Atici (Ed.) Open Context. <<http://opencontext.org/subjects/0CF37A48-3C8D-45CA-C7D8-58C2B9F03889>>

**Editorial Description (1)**

(18K BCE - 11K BCE)

**Editor's Note:** Date ranges are approximate and do not necessarily reflect the opinion of data contributors. These dates are provided only to facilitate searches.

**Linked Data:**

Open Context Zooarchaeology Annotations-Has anatomical identification :: [UBERON \(Uber Anatomy Ontology\)- fused metatarsal bones 3 and 4](#)

Biological Taxonomy Vocabulary-Has Biological Taxonomy :: [Encyclopedia of Life- Ovis orientalis](#)

Open Context Zooarchaeology Annotations-Has fusion character :: [Open Context Zooarchaeology Annotations- Distal epiphysis unfused](#)

**Linked Media (0)**
[ArchaeoML \(XML\) Version](#)
[Version-control \(Github, XML Data\)](#)
**Copyright Licensing**


To the extent to which copyright applies, this content is licensed with:  
Creative Commons Attribution 3 License Attribution Required: Citation, and hyperlinks for online uses.



**Item: Bone J8c22-31**  
**Class: Animal Bone**

**Project: Zooarchaeology of Öküzini Cave**  
**Number of Views: 5**

Context (click to view): [Turkey / Öküzini Cave / VII / Square J8c](#)

**Descriptive Properties (23)**

Variable	Value
Archaeological Horizon	22
Osteo Id	Metatarsus III + IV
Taxonomic Id	<a href="#">Ovis orientalis</a>
Articulation	<a href="#">Separate</a>
Symmetry	<a href="#">Right</a>
Sex	<a href="#">Nonidentified</a>
Pathology	<a href="#">No pathology</a>

**Linked Data:**

Open Context Zooarchaeology Annotations-Has anatomical identification :: [UBERON \(Uber Anatomy Ontology\)- fused metatarsal bones 3 and 4](#)

Biological Taxonomy Vocabulary-Has Biological Taxonomy :: [Encyclopedia of Life- Ovis orientalis](#)

Open Context Zooarchaeology Annotations-Has fusion character :: [Open Context Zooarchaeology Annotations- Distal epiphysis unfused](#)

Depth of the medial trochlear condyle (B)	11.7
Greatest depth of the distal end (Dd)	17.5
Greatest breadth of the distal end (Bd)	27.2

**Linked Persons / Organizations (1)**

[Levent Atici](#), *Principle Author / Analyst*

**Project Editorial Status**

★★★★☆ [Managing editor reviewed](#)

**Suggested Citation**

Levent Atici. "Zooarchaeology of Öküzini Cave: Bone J8c22-31 (Animal Bone)" (Released 2013-02-27). Levent Atici (Ed.) Open Context. <<http://opencontext.org/subjects/0CF37A48-3C8D-45CA-C7D8-58C2B9F03889>>

**Editorial Description (1)**

[\(18K BCE - 11K BCE\)](#)

**Editor's Note:** Date ranges are approximate and do not necessarily reflect the opinion of data contributors. These dates are provided only to facilitate searches.

**Linked Data:**

Open Context Zooarchaeology Annotations-Has anatomical identification :: [UBERON \(Uber Anatomy Ontology\)- fused metatarsal bones 3 and 4](#)

Biological Taxonomy Vocabulary-Has Biological Taxonomy :: [Encyclopedia of Life- Ovis orientalis](#)

Open Context Zooarchaeology Annotations-Has fusion character :: [Open Context Zooarchaeology Annotations- Distal epiphysis unfused](#)

**Linked Media (0)**

[ArchaeoML \(XML\) Version](#)

[Version-control \(Github, XML Data\)](#)

**Copyright Licensing**


To the extent to which copyright applies, this content is licensed with:  
[Creative Commons Attribution 3.0 License](#) Attribution Required: Citation, and hyperlinks for online uses.










**Item: Bone J8c22-31**
**Class: Animal Bone**
**Project: Zooarchaeology of Öküzini Cave**
**Number of Views: 5**

Context (click to view):

[Turkey / Öküzini Cave / VII / Square J8c](#)
**Descriptive Properties (23)**

Variable	Value
Archaeological Horizon	22
Osteo Id	Metatarsus III + IV
Taxonomic Id	<a href="#">Ovis orientalis</a>
Articulation	<a href="#">Separate</a>
Symmetry	<a href="#">Right</a>
Sex	<a href="#">Nonidentified</a>
Pathology	<a href="#">No pathology</a>

**Linked Data:**

Open Context Zooarchaeology Annotations-Has anatomical identification :: [UBERON \(Uber Anatomy Ontology\)- fused metatarsal bones 3 and 4](#)

Biological Taxonomy Vocabulary-Has Biological Taxonomy :: [Encyclopedia of Life- Ovis orientalis](#)

Open Context Zooarchaeology Annotations-Has fusion character :: [Open Context Zooarchaeology Annotations- Distal epiphysis unfused](#)

Depth of the medial trochlear condyle (B)	11.7
Greatest depth of the distal end (Dd)	17.5
Greatest breadth of the distal end (Bd)	27.2

**Linked Persons / Organizations (1)**
[Levent Atici, Principle Author / Analyst](#)
**Project Editorial Status**

★★★★★ Managing editor reviewed

**Suggested Citation**

Levent Atici. "Zooarchaeology of Öküzini Cave: Bone J8c22-31 (Animal Bone)" (Released 2013-02-27). Levent Atici (Ed.) Open Context. <<http://opencontext.org/subjects/0CF37A48-3C8D-45CA-C7D8-58C2B9F03889>>

**Editorial Description (1)**

(18K BCE - 11K BCE)

**Editor's Note:** Date ranges are approximate and do not necessarily reflect the opinion of data contributors. These dates are provided only to facilitate searches.

**Linked Data:**

Open Context Zooarchaeology Annotations-Has anatomical identification :: [UBERON \(Uber Anatomy Ontology\)- fused metatarsal bones 3 and 4](#)

Biological Taxonomy Vocabulary-Has Biological Taxonomy :: [Encyclopedia of Life- Ovis orientalis](#)

Open Context Zooarchaeology Annotations-Has fusion character :: [Open Context Zooarchaeology Annotations- Distal epiphysis unfused](#)

**Linked Media (0)**
[ArchaeoML \(XML\) Version](#)
[Version-control \(Github, XML Data\)](#)
**Copyright Licensing**


To the extent to which copyright applies, this content is licensed with:  
 Creative Commons Attribution 3.0 License Attribution Required: Citation, and hyperlinks for online uses.



Search EOL ...

Become part of the EOL community!  
Join EOL now  
Already a member? Sign In

# Ovis orientalis

add to a collection

Urial [learn more about names for this taxon](#)

Tweet 0 Like 2

- Overview
- Detail
- 3 Media
- 0 Maps
- Names
- Community
- Resources
- Literature
- Updates



Ovis orientalis **TRUSTED**  
Jörg Hempel  
Source: Flickr: EOL Images

[see all media](#)

IUCN threat status: **Vulnerable (VU)**

## Brief Summary

[read full entry](#)

[learn more about this article](#)

## Biology

Mouflon tend to feed early in the morning and in the evening, resting during the day under an overhanging bush or rock, where they are well hidden. Mouflon are gregarious and form non-territorial herds grazing on grasses, unless food is scarce when they will have to travel long distances. The sexes are well developed as the

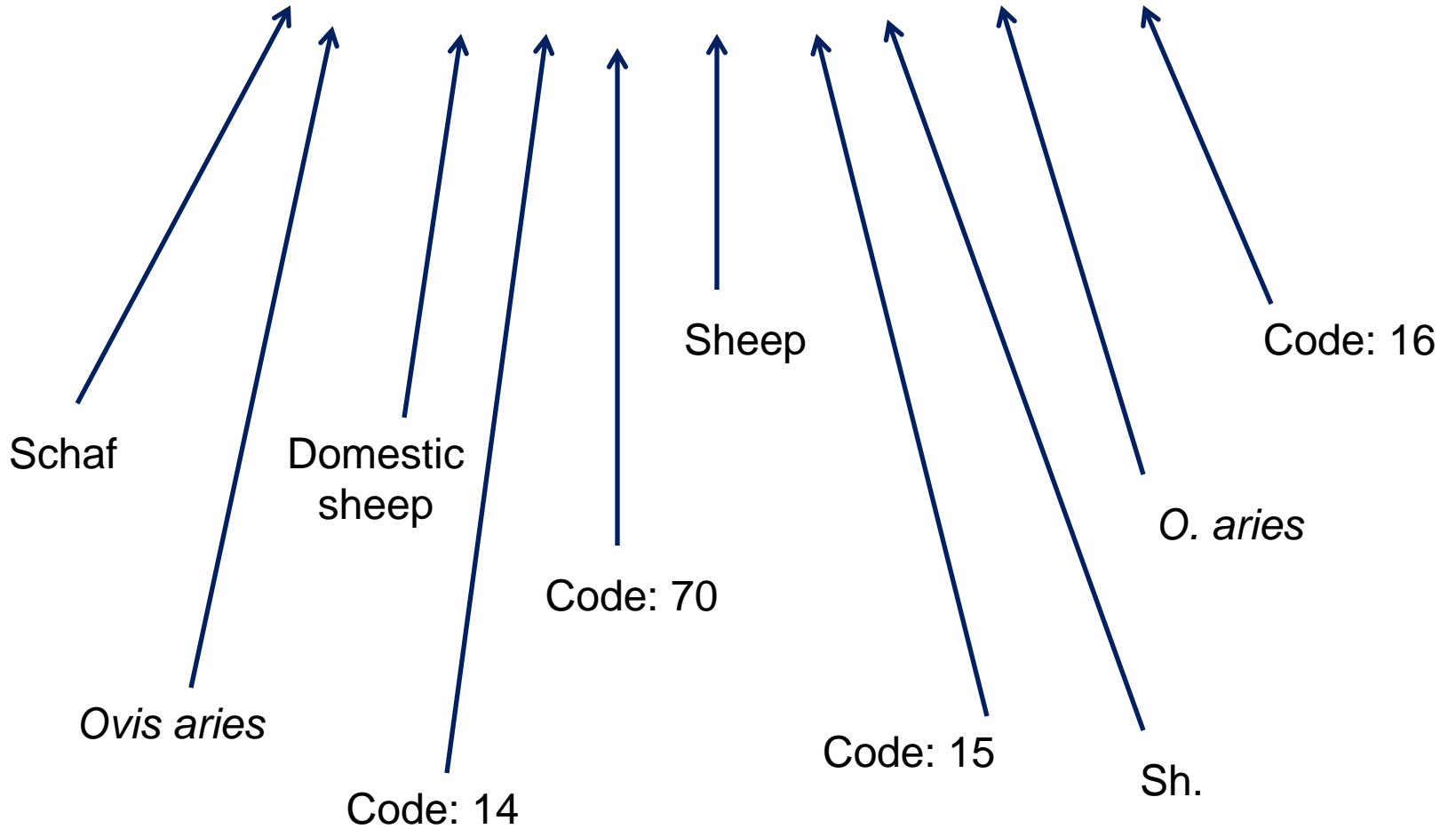
## Found in 2 classifications [see all](#)

Species recognized by NCBI Taxonomy:

- Cellular organisms
- Eukaryota
- Opisthokonta
- Metazoa
- Eumetazoa
- Bilateria
- Deuterostomia
- Chordata
- Crinata
- Vertebrata
- Gnathostomata
- Teleostomi
- Euteleostomi
- Sarcopterygii
- Tetrapoda
- Amniota
- Mammalia
- Theria
- Eutheria
- Leuconithea
- Cetartiodactyla
- Ruminantia
- Bovidae
- Bovinae
- Ovis
- Ovis orientalis
- Ovis orient
- Ovis orient
- Ovis orient
- Ovis orient
- Ovis ammon
- Ovis arles
- Ovis canad

# “Ovis aries”

<http://eol.org/pages/311906/>





## Browse and Filter

Click on one of the links below to further limit your view of *analytic data* in Open Context.

Or, type a search term in the box:



Sort facets alphabetically: A,B,C ↓

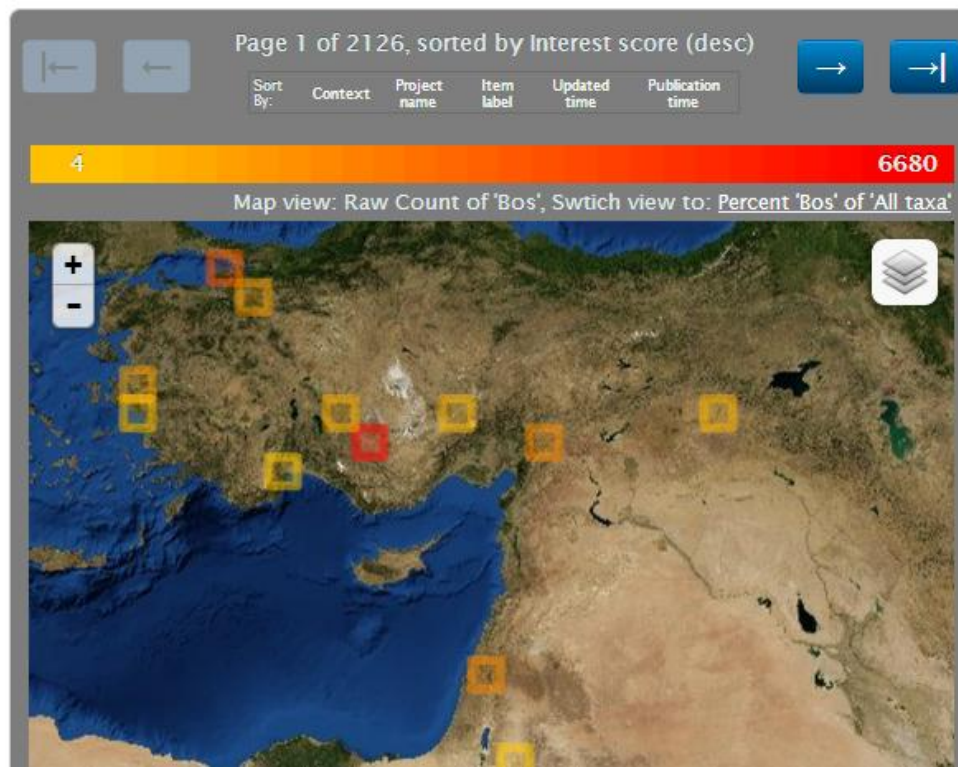
- EOL linked Biological Taxa
  - Select Multiple
    - [Bos taurus](#) Linnaeus, 1758 (Encyclopedia of Life) 11835
    - [Bos primigenius](#) (Encyclopedia of Life) 290
- Descriptive Properties
  - Select Multiple
    - [Element](#) 16329
    - [Taxon](#) 13763
    - [Symmetry](#) 10175
    - [Certainty](#) 7733
    - [Weathering](#) 6010
    - [Recovery](#) 5449
    - [Validity](#) 5449
    - [Side](#) 5243
    - [Species](#) 5005
    - [Class](#) 4614
    - [Fragment Size](#) 3628
    - [Element Name](#) 3601
  - More...
- Context
  - Select Multiple
    - [Çatalhöyük](#) 6438
    - [Ilıpınar](#) 3601
    - [Hazor](#) 2056
    - [Domuztepe](#) 2014

Open Context currently has **21252** items, filtered by the following criteria:

- (1) Contained in: [Turkey](#) **OR** [Iran](#) **OR** [Israel](#) **OR** [Jordan](#)
- (2) Biological Taxa: [Bos \(Cattle, oxen\)](#) (from *Encyclopedia of Life*); includes more specific sub-taxa
- (3) Geo-spatial Tile: 1 (Zoom out a tile level)

Last Updated: *September 3, 2013, 1:44 am*

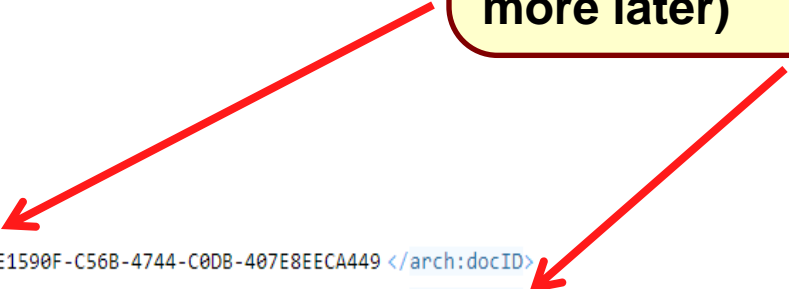
[View a map summary](#)



<arch:spatialUnit xmlns:arch="http://ochre.lib.uchicago.edu/schema/SpatialUnit/SpatialUnit.xsd" xmlns:oc="http://opencontext.org/schema/space\_schema\_v1.xsd" xmlns:dc="

```
<arch:name>
  <arch:string> PC 20030129 </arch:string>
</arch:name>
<oc:item_class>
<arch:observations>
  <arch:observation obsNumber="1">
    <oc:obs_metadata>
      <arch:properties>
        <arch:property>
          <arch:variableID> A70236CA-1599-42F5-4A12-ACEC8C423850 </arch:variableID>
          <arch:valueID> 4D0D2D76-FD06-4BEC-5140-91AD1E17489A </arch:valueID>
          <oc:propid href="http://opencontext.org/properties/251EBD03-7267-4C14-638A-CB99AEDBCEB3"> 251EBD03-7267-4C14-638A-CB99AEDBCEB3 </oc:propid>
          <oc:var_label type="nominal"> Fabric Category </oc:var_label>
          <oc:show_val> Bronze </oc:show_val>
        <oc:linkedData>
</arch:property>
<arch:property>
          <arch:variableID> 7DB79382-7432-42A4-FBC5-EF760691905A </arch:variableID>
          <arch:valueID> 4161B46F-811D-4FD4-EB8C-0669D9020097 </arch:valueID>
          <oc:propid href="http://opencontext.org/properties/145500AA-77FF-4C1D-CF86-A075DCAAB43B"> 145500AA-77FF-4C1D-CF86-A075DCAAB43B </oc:propid>
          <oc:var_label type="nominal"> Object Type </oc:var_label>
          <oc:show_val> Costume, Accessories::Chain / Links </oc:show_val>
        <oc:linkedData>
</arch:property>
<arch:property>
<arch:property>
<arch:property>
<arch:property>
<arch:property>
<arch:property>
<arch:property>
<arch:property>
</arch:properties>
<arch:links>
  <arch:docID type="resource" info="link"> 86E1590F-C568-4744-C0DB-407E8EECA449 </arch:docID>
  <arch:docID type="resource" info="link"> 279F9BAC-587A-4D16-CCF9-DA340A722773 </arch:docID>
```

**Linking relations to other related XML documents (Describing a “graph”, a data model Erik will discuss more later)**



```
<arch:spatialUnit xmlns:arch="http://ochre.lib.uchicago.edu/schema/SpatialUnit/SpatialUnit.xsd" xmlns:oc="http://opencontext.org/schema/space_schema_v1.xsd" xmlns:dc="
```

```
<arch:name>
  <arch:string> PC 20030129 </arch:string>
</arch:name>
▶ <oc:item_class>
▼ <arch:observations>
  ▼ <arch:observation obsNumber="1">
    ▶ <oc:obs_metadata>
      ▼ <arch:properties>
        <arch:property>
          <arch:variableID> A70236CA-1599-42F5-4A12-ACEC8C423850 </arch:variableID>
          <arch:valueID> 4D0D2D76-FD06-4BEC-5140-91AD1E17489A </arch:valueID>
          <oc:propid href="http://opencontext.org/properties/251EBD03-7267-4C14-638A-CB99AEDBCEB3"> 251EBD03-7267-4C14-638A-CB99AEDBCEB3 </oc:propid>
          <oc:var_label type="nominal"> Fabric Category </oc:var_label>
          <oc:show_val> Bronze </oc:show_val>
        ▶ <oc:linkedData>
          </arch:property>
          <arch:property>
            <arch:variableID> 7DB79382-7432-42A4-FBC5-EF760691905A </arch:var
            <arch:valueID> 4161B46F-811D-4FD4-EB8C-0669D9020097 </arch:valueID
            <oc:propid href="http://opencontext.org/properties/145500AA-77FF
            <oc:var_label type="nominal"> Object Type </oc:var_label>
            <oc:show_val> Costume, Accessories::Chain / Links </oc:show_val>
          ▶ <oc:linkedData>
            </arch:property>
          ▶ <arch:property>
          ▶ <arch:property>
          ▶ <arch:property>
          ▶ <arch:property>
          ▶ <arch:property>
          ▶ <arch:property>
          ▶ <arch:property>
          </arch:properties>
          <arch:links>
            <arch:docID type="resource" info="link"> 86E1590F-C568-4744-C0DB-407E8EECA449 </arch:docID>
            <arch:docID type="resource" info="link"> 279F9BAC-587A-4D16-CCF9-DA340A722773 </arch:docID>
```

## Where do we get the XML?

- Schema mapping (source data tables) mapped into MySQL relational database (abstract, general schema)
- MySQL + PHP generates XML documents
- Since 2007, since then new tools: Open Refine, graph data stores, NoSQL databases, etc.



## Project: Asian Stoneware Jars

Element composition of Asian Stoneware Jars from the 9th - 19th centuries CE

Number of Views: 363

### Project / Collection Overview

#### Introduction

Asian production and trade in plain and decorated porcelain tablewares become increasingly prominent in the Asian and later international maritime economy from as early as the 9th century CE. One of the less well understood aspects of this trade was the production of large stoneware jars. This project seeks to elementally characterize a wide and diverse range of these jars using inductively coupled plasma optical emission spectrometry (ICP-OES) and neutron activation analysis (NAA), and proton-induced X-ray and γ-ray emission spectrometry (PIXE-PIGE) to better understand likely provenance as well as production dynamics over this period.

Over twenty Asian and European wreck assemblages were sampled with the majority ranging in date from the fourteenth to the seventeenth century. The sample also includes a substantial sample from a National Museum of the Philippines and the University of Michigan collections of stoneware jars from Philippine burials as well as other terrestrial collections in the Southeast Asian region. The establishment of clear compositional groups provides a basis for assigning provenance and the postulation of seventeen discrete production zones ranging from southern China to Burma, but for which precise production locations remain largely unknown or unverified. In combination with typological information and chronological organization, these groups provide a valuable proxy for assessing changes in regional production strategies through the transition to the modern era.

ICP-OES, cross validated with NAA and PIXE-PIGE was used to generate a robust elemental dataset for this assemblage. This comprehensive database is designed to enable comparison and incorporation with ongoing analyses of archaeological stoneware samples from new archaeological excavations. The scale of this work is currently unsurpassed but nonetheless it must be considered as a preliminary attempt to develop a new perspective on the social, economic, and political dynamics of this time and region.

#### Notes about Context and Geo-locations

Individual vessels samples originally came from either terrestrial or ship-wreck sources. This project provides only general contextual information. For more specific information about the archaeological context of the objects sampled, please refer to documentation maintained by relevant museums.

Because of site security risks and other factors, all location information presented in this project is approximate. Indicated locations may be over 100 km. from their true positions. Analytic uses of these location data should account for these inaccuracies.

#### Related References

Grave, Peter, and Maccheroni, Michael

2009 Characterizing Asian Stoneware Jar Production at the Transition to the Early Modern Period, 1550-1650. *Scientific research on historic Asian ceramics: proceedings of the Fourth Forbes Symposium at the Freer Gallery of Art*. edited by Blythe Ellen McCarthy, pp. 186-204. London, Archetype Publications in association with the Freer Gallery of Art, Smithsonian Institution. [\[WorldCat\]](#) [\[Open Access\]](#)

#### Project Editorial Status

●●●○ Managing editor reviewed

#### Suggested Citation

Peter Grave. "Asian Stoneware Jars: (Overview)" (Released 2013-03-07). Peter Grave (Ed.) Open Context.  
<<http://opencontext.org/projects/4B16F48E-6F5D-41E0-F568-FCE64BE6D3FA>>  
DOI:10.6078/M7057CVH

#### Browse this Project

## XML use:

- Some nodes have mixed content XHTML (+ RDFa)
- Other nodes easier for databases

	<b>Mauritius</b>	62 items contained in this context. Dating between: 1609 to 1629
	<b>Australia</b>	61 items contained in this context. Dating between: 1629 to 1727
	<b>Indian Ocean</b>	33 items contained in this context. Dating between: 1615 to 1615



```
> <arch:note type="short_des">
<arch:note type="long_des">
  <arch:string type="xhtml">
    <div xmlns="http://www.w3.org/1999/xhtml">
      <div>
        <h4>Introduction </h4>
        <p>
          Asian production and trade in plain and decorated porcelain tablewares become increasingly prominent in the Asian and later international maritime economy from as early as the 9th century CE. One of the less well understood aspects of this trade was the production of large stoneware jars. This project seeks to elementally characterize a wide and diverse range of these jars using inductively coupled plasma optical emission spectrometry (ICP-OES) and neutron activation analysis (NAA), and proton-induced X-ray and  $\gamma$ -ray emission spectrometry (PIXE-PIGE) to better understand likely provenance as well as production dynamics over this period.
        </p>
        <p>
        </p>
        <h5> Notes about Context and Geo-locations </h5>
        <p>
          Because of site security risks and other factors, all location information presented in this project is approximate. Indicated locations may be over 100 km. from their true positions. Analytic uses of these location data should account for these inaccuracies.
        </p>
        <h4> Related References </h4>
        <div resource="http://opencontext.org/projects/4B16F48E-6F5D-41E0-F568-FCE64BE6D3FA">
          <div id="pub-2009-1" rel="dcterms:isReferencedBy" class="biblio-item">
            <a style="display:none;" href="#pub-2009-1"> </a>
            <div typeof="dcterms:BibliographicResource bibo:BookSection" resource="#pub-2009-1">
              <div property="dcterms:bibliographicCitation">
                <div class="ref-links">
              </div>
            </div>
          </div>
        </div>
      </div>
    </arch:string>
  </arch:note>
</arch:notes>
<oc:metadata>
  <dc:title> Asian Stoneware Jars: (Overview) </dc:title>
  <dc:publisher> Open Context </dc:publisher>
  <dc:date> 2013-03-07 </dc:date>
```

```

▶ <arch:note type="short_des">
  <arch:string type="xhtml">
    <div xmlns="http://www.w3.org/1999/xhtml">
      <div>
        <h4>Introduction </h4>
        <p>
          Asian production and trade in plain and decorated porcelain tablewares become increasingly prominent in the Asian and later international maritime economy from as early as the 9th century CE. One of the less well understood aspects of this trade was the production of large stoneware jars. This project seeks to elementally characterize a wide and diverse range of these jars using inductively coupled plasma optical emission spectrometry (ICP-OES) and neutron activation analysis (NAA), and proton-induced X-ray and γ-ray emission spectrometry (PIXE-PIGE) to better understand likely provenance as well as production dynamics over this period.
        </p>
▶ <p>
▶ <p>
        <h5> Notes about Context and Geo-locations </h5>
▶ <p>
        <p>
          Because of site security risks and other factors, all location information presented in this report is within a 100 km. from their true positions. Analytic uses of these location data should account for this.
        </p>
        <h4> Related References </h4>
        <div resource="http://opencontext.org/projects/4B16F48E-6F5D-41E0-F568-FCE64BE6D3FA">
          <div id="pub-2009-1" rel="dcterms:isReferencedBy" class="biblio-item">
            <a style="display:none;" href="#pub-2009-1"> </a>
            <div typeof="dcterms:BibliographicResource bibo:BookSection" resource="#pub-2009-1">
▶ <div property="dcterms:bibliographicCitation">
▶ <div class="ref-links">
            </div>
          </div>
        </div>
      </div>
    </div>
  </arch:string>
</arch:note>
</arch:notes>
<oc:metadata>
  <dc:title> Asian Stoneware Jars: (Overview) </dc:title>
  <dc:publisher> Open Context </dc:publisher>
  <dc:date> 2013-03-07 </dc:date>

```

**<arch:string>**  
Node with mixed content (XHTML)

```

▶ <arch:note type="short_des">
  <arch:string type="xhtml">
    <div xmlns="http://www.w3.org/1999/xhtml">
      <div>
        <h4>Introduction </h4>
        <p>
          Asian production and trade in plain and decorated porcelain tablewares become increasingly prominent in the Asian and later international maritime economy from as early as the 9th century CE. One of the less well understood aspects of this trade was the production of large stoneware jars. This project seeks to elementally characterize a wide and diverse range of these jars using inductively coupled plasma optical emission spectrometry (ICP-OES) and neutron activation analysis (NAA), and proton-induced X-ray and γ-ray emission spectrometry (PIXE-PIGE) to better understand likely provenance as well as production dynamics over this period.
        </p>
▶ <p>
▶ <p>
        <h5> Notes about Context and Geo-locations </h5>
▶ <p>
        <p>
          Because of site security risks and other factors, all location information presented in this project is approximate. Indicated locations may be over 100 km. from their true positions. Analytic uses of these location data should account for these inaccuracies.
        </p>
        <h4> Related References </h4>
        <div resource="http://opencontext.org/projects/4B16F48E-6F5D-41E0-F568-FCE64BE6D3FA">
          <div id="pub-2009-1" rel="dcterms:isReferencedBy" class="biblio-item">
            <a style="display:none;" href="#pub-2009-1"> </a>
            <div typeof="dcterms:BibliographicResource bibo:BookSection" resource="#pub-2009-1">
▶ <div property="dcterms:bibliographicCitation">
▶ <div class="ref-links">
            </div>
          </div>
        </div>
      </div>
    </div>
  </arch:string>
</arch:note>
</arch:notes>
<oc:metadata>
  <dc:title> Asian Stoneware Jars: (Overview) </dc:title>
  <dc:publisher> Open Context </dc:publisher>
  <dc:date> 2013-03-07 </dc:date>

```

RDFa  
("Linked  
Data" in  
XHTML)

```

▶ <arch:note type="short_des">
  <arch:note type="long_des">
    <arch:string type="xhtml">
      <div xmlns="http://www.w3.org/1999/xhtml">
        <div>
          <h4>Introduction </h4>
          <p>
            Asian production and trade in plain and decorated porcelain tablewares become increasingly prominent in the Asian and later international maritime economy from as early as the 9th century CE. One of the less well understood aspects of this trade was the production of large stoneware jars. This project seeks to elementally characterize a wide and diverse range of these jars using inductively coupled plasma optical emission spectrometry (ICP-OES) and neutron activation analysis (NAA), and proton-induced X-ray and γ-ray emission spectrometry (PIXE-PIGE) to better understand likely provenance as well as production dynamics over this period.
          </p>
          ▶ <p>
          ▶ <p>
          <h5> Notes about Context and Geo-locations </h5>
          ▶ <p>
            Because of site security risks and other factors, all location information presented in this project is approximate. Indicated locations may be over 100 km. from their true positions. Analytic uses of these location data should account for these inaccuracies.
          </p>
          <h4> Related References </h4>
          <div resource="http://opencontext.org/projects/4B16F48E-6F5D-41E0-F568-FCE64BE6D3FA">
            <div id="pub-2009-1" rel="dcterms:isReferencedBy" class="biblio-item">
              <a style="display:none;" href="#pub-2009-1"> </a>
              <div typeof="dcterms:BibliographicResource bibo:BookSection" resource="#pub-2009-1">
                ▶ <div property="dcterms:bibliographicCitation">
                ▶ <div class="ref-links">
                </div>
              </div>
            </div>
          </div>
        </div>
      </arch:string>
    </arch:note>
  </arch:notes>
</oc:metadata>
<dc:title> Asian Stoneware Jars: (Overview) </dc:title>
<dc:publisher> Open Context </dc:publisher>
<dc:date> 2013-03-07 </dc:date>

```



Dublin Core metadata elements  
("dc" namespace)



```
<arch:name>
  <arch:string> PC 20030129 </arch:string>
</arch:name>
▶ <oc:item_class>
▼ <arch:observations>
  ▼ <arch:observation obsNumber="1">
    ▶ <oc:obs_metadata>
      ▼ <arch:properties>
        <arch:property>
          <arch:variableID> A70236CA-1599-42F5-4A12-ACEC8C423850 </arch:variableID>
          <arch:valueID> 4D0D2D76-FD06-4BEC-5140-91AD1E17489A </arch:valueID>
          <oc:propid href="http://opencontext.org/properties/251EBD03-7267-4C14-638A-CB99AEDBCEB3">
          <oc:var_label type="nominal"> Fabric Category </oc:var_label>
          <oc:show_val> Bronze </oc:show_val>
        ▶ <oc:linkedData>
          </arch:property>
        <arch:property>
          <arch:variableID> 7DB79382-7432-42A4-FBC5-EF760691905A </arch:variableID>
          <arch:valueID> 4161B46F-811D-4FD4-EB8C-0669D9020097 </arch:valueID>
          <oc:propid href="http://opencontext.org/properties/145500AA-77FF-4C1D-CF86-A075DCAAB4">
          <oc:var_label type="nominal"> Object Type </oc:var_label>
          <oc:show_val> Costume, Accessories::Chain / Links </oc:show_val>
        ▶ <oc:linkedData>
          </arch:property>
        ▶ <arch:property>
        ▶ <arch:property>
        ▶ <arch:property>
        ▶ <arch:property>
        ▶ <arch:property>
        ▶ <arch:property>
        ▶ <arch:property>
        ▶ <arch:property>
        </arch:properties>
      <arch:links>
        <arch:docID type="resource" info="link"> 86E1590F-C568-4744-C0DB-407E8EECA449 </arch:docID>
        <arch:docID type="resource" info="link"> 279F9BAC-587A-4D16-CCF9-DA340A722773 </arch:docID>
```

## Global Schema

- ArchaeoML XSDs disappeared in 2010 ☹️
- Nobody else uses it (potential as interchange format not realized)
- Not a huge amount of XML expertise in domain
- More widespread interest in RDF (in academia)

## Table: “Çatalhöyük Main Zooarchaeological Dataset”

The data in this table comes from one project or collection. Some data relating to the records in this table may depend upon complex structures that cannot be easily represented in a table format. If you need data fully expressing such complex structures, download the XML representations of these data. To learn how to do this, please read the [web-services documentation](#).

### Download Table: **CSV format**

#### Download File Formats

[Comma Separated Value \(CSV\)](#)

(78.6M)

[ZIP-compressed CSV file](#)

(5.8M)

[GZIP-compressed CSV file](#)

(5.8M)

[Javascript Object Notation \(JSON\) file](#)

(188.7M)

[Javascript Object Notation \(JSON\) file \[Sample, limited records\]](#)

(807.9K)

<b>Table Name</b>	Çatalhöyük Main Zooarchaeological Dataset
<b>Number of Records</b>	126116
<b>Table Description</b>	<p>This is the main data table for the “Çatalhöyük Zooarchaeology” project. To promote interoperability and facilitate reuse, Open Context editors annotated these data with Encyclopedia of Life (EOL) and UBERON identifiers. In addition, Open Context editors related relevant data to the “Open Context Zooarchaeology” ontology / controlled vocabulary. Support for this data publication came from the Encyclopedia of Life Computational Data Challenge.</p> <p>These data describe specimen from all of the Çatalhöyük excavation areas, except for Area TP, which is available in another table.</p>
<b>Principal Analyst(s) / Observers</b>	Nerissa Russell, Katheryn Twiss, Sheelagh Frame, Lisa Yeomans, Louise Martin, Claire Christensen, David Orton, Arzu Demirergi, Stephanie Meese, Kamilla Pawlowska, Banu Aydinuloglu, Liz Henton, Adam Watson, Rhian Mayon-White, Ian Cameron, Amanda Erwin, Vesna Dimitrijevic, Rebecca Daly, Nobs Simmons, Serkan Yeni, Denise Carruthers, Chris Hills, Hijlke Buitenhuis, Leola Leblanc, Levent Atci, Dusan Boric, Adrienne Powell
<b>Directing / Supervisory People (Editorial Role)</b>	David Orton, Sheelagh Frame, Louise Martin, Katheryn Twiss, Nerissa Russell
<b>Projects and Collections</b>	<a href="#">Çatalhöyük Zooarchaeology (126116)</a>

## Table: “Çatalhöyük Main Zooarchaeological Dataset”

The data in this table comes from one project or collection. Some data relating to the records in this table may depend upon complex structures that cannot be easily represented in a table format. If you need data fully expressing such complex structures, download the XML representations of these data. To learn how to do this, please read the [web-services documentation](#).

### Download Table: **CSV format**

#### Download File Formats

[Comma Separated Value \(CSV\)](#)

(78.6M)

[ZIP-compressed CSV file](#)

(5.8M)

[GZIP-compressed CSV file](#)

(5.8M)

[Javascript Object Notation \(JSON\) file](#)

(188.7M)

[Javascript Object Notation \(JSON\) file \[Sample, limited records\]](#)

(807.9K)

<b>Table Name</b>	Çatalhöyük Main Zooarchaeological Dataset
<b>Number of Records</b>	126116
<b>Table Description</b>	<p>This is the main data table for the “Çatalhöyük Zooarchaeology” project. To promote interoperability, editors annotated these data with Encyclopedia of Life (EOL) and UBERON identifiers. In addition, we added data to the “Open Context Zooarchaeology” ontology / controlled vocabulary. Support for this data is provided by the Encyclopedia of Life Computational Data Challenge.</p> <p>These data describe specimen from all of the Çatalhöyük excavation areas, except for Area TF.</p>
<b>Principal Analyst(s) / Observers</b>	Nerissa Russell, Katheryn Twiss, Sheelagh Frame, Lisa Yeomans, Louise Martin, Claire Christie, Stephanie Meese, Kamilla Pawlowska, Banu Aydinuloglu, Liz Henton, Adam Watson, Rhian Mayon-White, Ian Cameron, Amanda Erwin, Vesna Dimitrijevic, Rebecca Daly, Nobs Symmons, Serkan Yeni, Denise Carruthers, Chris Hills, Hijlke Buitenhuis, Leola Leblanc, Levent Atci, Dusan Boric, Adrienne Powell
<b>Directing / Supervisory People (Editorial Role)</b>	David Orton, Sheelagh Frame, Louise Martin, Katheryn Twiss, Nerissa Russell
<b>Projects and Collections</b>	<a href="#">Çatalhöyük Zooarchaeology (126116)</a>

**Much more comfort, familiarity in domain (despite limitations)**

Home Insert Page Layout Formulas Data Review View PDF Acrobat

Normal Page Layout Page Break Preview Custom Views Full Screen

Ruler  Formula Bar  
 Gridlines  Headings  
 Message Bar

Zoom 100% Zoom to Selection

New Window Arrange All Freeze Panes Hide Unhide

View Side by Side Synchronous Scrolling Reset Window Position

Save Workspace Switch Windows

Macros

	A	B	C	D	E	F	G	H
1	Open Context URI	Item label	Project URI	Project name	Related person(s)	Context (1)	Context (2)	Context (3)
2	<a href="http://opencontext.org/subjects/E93B0801-C1F">http://opencontext.org/subjects/E93B0801-C1F</a>	15144.F1	<a href="http://opencontext.org/projects/1B42">http://opencontext.org/projects/1B42</a>	Çatalhöyük Zooarchaeology	David Orton	Turkey	Çatalhöyük	Mound We
3	<a href="http://opencontext.org/subjects/1E85F957-C78">http://opencontext.org/subjects/1E85F957-C78</a>	15144.F11	<a href="http://opencontext.org/projects/1B42">http://opencontext.org/projects/1B42</a>	Çatalhöyük Zooarchaeology	David Orton	Turkey	Çatalhöyük	Mound We
4	<a href="http://opencontext.org/subjects/2B536F1D-494">http://opencontext.org/subjects/2B536F1D-494</a>	15144.F2	<a href="http://opencontext.org/projects/1B42">http://opencontext.org/projects/1B42</a>	Çatalhöyük Zooarchaeology	David Orton	Turkey	Çatalhöyük	Mound We
5	<a href="http://opencontext.org/subjects/321A7C3E-C05">http://opencontext.org/subjects/321A7C3E-C05</a>	15144.F3	<a href="http://opencontext.org/projects/1B42">http://opencontext.org/projects/1B42</a>	Çatalhöyük Zooarchaeology	David Orton	Turkey	Çatalhöyük	Mound We
6	<a href="http://opencontext.org/subjects/BB3DFD89-EA">http://opencontext.org/subjects/BB3DFD89-EA</a>	15144.F4	<a href="http://opencontext.org/projects/1B42">http://opencontext.org/projects/1B42</a>	Çatalhöyük Zooarchaeology	David Orton	Turkey	Çatalhöyük	Mound We
7	<a href="http://opencontext.org/subjects/FE9AD352-886">http://opencontext.org/subjects/FE9AD352-886</a>	15144.F5	<a href="http://opencontext.org/projects/1B42">http://opencontext.org/projects/1B42</a>	Çatalhöyük Zooarchaeology	David Orton	Turkey	Çatalhöyük	Mound We
8	<a href="http://opencontext.org/subjects/E0A49E6C-124">http://opencontext.org/subjects/E0A49E6C-124</a>	15144.F6	<a href="http://opencontext.org/projects/1B42">http://opencontext.org/projects/1B42</a>	Çatalhöyük Zooarchaeology	David Orton	Turkey	Çatalhöyük	Mound We
9	<a href="http://opencontext.org/subjects/B81D0A45-08">http://opencontext.org/subjects/B81D0A45-08</a>	15144.F7	<a href="http://opencontext.org/projects/1B42">http://opencontext.org/projects/1B42</a>	Çatalhöyük Zooarchaeology	David Orton	Turkey	Çatalhöyük	Mound We
10	<a href="http://opencontext.org/subjects/FED5FF1C-0DA">http://opencontext.org/subjects/FED5FF1C-0DA</a>	15144.F8	<a href="http://opencontext.org/projects/1B42">http://opencontext.org/projects/1B42</a>	Çatalhöyük Zooarchaeology	David Orton	Turkey	Çatalhöyük	Mound We
11	<a href="http://opencontext.org/subjects/7865EA14-652">http://opencontext.org/subjects/7865EA14-652</a>	15160.F1	<a href="http://opencontext.org/projects/1B42">http://opencontext.org/projects/1B42</a>	Çatalhöyük Zooarchaeology	David Orton	Turkey	Çatalhöyük	Mound We
12	<a href="http://opencontext.org/subjects/4F3B9A16-A3E">http://opencontext.org/subjects/4F3B9A16-A3E</a>	15160.F10	<a href="http://opencontext.org/projects/1B42">http://opencontext.org/projects/1B42</a>	Çatalhöyük Zooarchaeology	David Orton	Turkey	Çatalhöyük	Mound We
13	<a href="http://opencontext.org/subjects/E4C88730-569">http://opencontext.org/subjects/E4C88730-569</a>	15160.F100	<a href="http://opencontext.org/projects/1B42">http://opencontext.org/projects/1B42</a>	Çatalhöyük Zooarchaeology	David Orton	Turkey	Çatalhöyük	Mound We
14	<a href="http://opencontext.org/subjects/3D0CCD9D-03">http://opencontext.org/subjects/3D0CCD9D-03</a>	15160.F101	<a href="http://opencontext.org/projects/1B42">http://opencontext.org/projects/1B42</a>	Çatalhöyük Zooarchaeology	David Orton	Turkey	Çatalhöyük	Mound We
15	<a href="http://opencontext.org/subjects/9917C5C3-62E">http://opencontext.org/subjects/9917C5C3-62E</a>	15160.F102	<a href="http://opencontext.org/projects/1B42">http://opencontext.org/projects/1B42</a>	Çatalhöyük Zooarchaeology	David Orton	Turkey	Çatalhöyük	Mound We
16	<a href="http://opencontext.org/subjects/BB97AF04-07E">http://opencontext.org/subjects/BB97AF04-07E</a>	15160.F103	<a href="http://opencontext.org/projects/1B42">http://opencontext.org/projects/1B42</a>	Çatalhöyük Zooarchaeology	David Orton	Turkey	Çatalhöyük	Mound We
17	<a href="http://opencontext.org/subjects/57BBFF8A-1A7">http://opencontext.org/subjects/57BBFF8A-1A7</a>	15160.F104	<a href="http://opencontext.org/projects/1B42">http://opencontext.org/projects/1B42</a>	Çatalhöyük Zooarchaeology	David Orton	Turkey	Çatalhöyük	Mound We
18	<a href="http://opencontext.org/subjects/9A4DE123-CA">http://opencontext.org/subjects/9A4DE123-CA</a>	15160.F105	<a href="http://opencontext.org/projects/1B42">http://opencontext.org/projects/1B42</a>	Çatalhöyük Zooarchaeology	David Orton	Turkey	Çatalhöyük	Mound We
19	<a href="http://opencontext.org/subjects/25F21C15-E44">http://opencontext.org/subjects/25F21C15-E44</a>	15160.F106	<a href="http://opencontext.org/projects/1B42">http://opencontext.org/projects/1B42</a>	Çatalhöyük Zooarchaeology	David Orton	Turkey	Çatalhöyük	Mound We
20	<a href="http://opencontext.org/subjects/3869D3CE-AF5">http://opencontext.org/subjects/3869D3CE-AF5</a>	15160.F107	<a href="http://opencontext.org/projects/1B42">http://opencontext.org/projects/1B42</a>	Çatalhöyük Zooarchaeology	David Orton	Turkey	Çatalhöyük	Mound We
21	<a href="http://opencontext.org/subjects/761A31FF-933">http://opencontext.org/subjects/761A31FF-933</a>	15160.F108	<a href="http://opencontext.org/projects/1B42">http://opencontext.org/projects/1B42</a>	Çatalhöyük Zooarchaeology	David Orton	Turkey	Çatalhöyük	Mound We
22	<a href="http://opencontext.org/subjects/08EF979D-FAF">http://opencontext.org/subjects/08EF979D-FAF</a>	15160.F109	<a href="http://opencontext.org/projects/1B42">http://opencontext.org/projects/1B42</a>	Çatalhöyük Zooarchaeology	David Orton	Turkey	Çatalhöyük	Mound We
23	<a href="http://opencontext.org/subjects/D37E8EFD-DF5">http://opencontext.org/subjects/D37E8EFD-DF5</a>	15160.F11	<a href="http://opencontext.org/projects/1B42">http://opencontext.org/projects/1B42</a>	Çatalhöyük Zooarchaeology	David Orton	Turkey	Çatalhöyük	Mound We
24	<a href="http://opencontext.org/subjects/2E38570B-555">http://opencontext.org/subjects/2E38570B-555</a>	15160.F110	<a href="http://opencontext.org/projects/1B42">http://opencontext.org/projects/1B42</a>	Çatalhöyük Zooarchaeology	David Orton	Turkey	Çatalhöyük	Mound We
25	<a href="http://opencontext.org/subjects/5E93CFDD-E5">http://opencontext.org/subjects/5E93CFDD-E5</a>	15160.F111	<a href="http://opencontext.org/projects/1B42">http://opencontext.org/projects/1B42</a>	Çatalhöyük Zooarchaeology	David Orton	Turkey	Çatalhöyük	Mound We
26	<a href="http://opencontext.org/subjects/9DEF875E-362">http://opencontext.org/subjects/9DEF875E-362</a>	15160.F112	<a href="http://opencontext.org/projects/1B42">http://opencontext.org/projects/1B42</a>	Çatalhöyük Zooarchaeology	David Orton	Turkey	Çatalhöyük	Mound We
27	<a href="http://opencontext.org/subjects/3342AB03-A9E">http://opencontext.org/subjects/3342AB03-A9E</a>	15160.F12	<a href="http://opencontext.org/projects/1B42">http://opencontext.org/projects/1B42</a>	Çatalhöyük Zooarchaeology	David Orton	Turkey	Çatalhöyük	Mound We
28	<a href="http://opencontext.org/subjects/F2C973D8-872">http://opencontext.org/subjects/F2C973D8-872</a>	15160.F120	<a href="http://opencontext.org/projects/1B42">http://opencontext.org/projects/1B42</a>	Çatalhöyük Zooarchaeology	David Orton	Turkey	Çatalhöyük	Mound We
29	<a href="http://opencontext.org/subjects/208D2BC2-04F">http://opencontext.org/subjects/208D2BC2-04F</a>	15160.F13	<a href="http://opencontext.org/projects/1B42">http://opencontext.org/projects/1B42</a>	Çatalhöyük Zooarchaeology	David Orton	Turkey	Çatalhöyük	Mound We
30	<a href="http://opencontext.org/subjects/6B39054F-477">http://opencontext.org/subjects/6B39054F-477</a>	15160.F14	<a href="http://opencontext.org/projects/1B42">http://opencontext.org/projects/1B42</a>	Çatalhöyük Zooarchaeology	David Orton	Turkey	Çatalhöyük	Mound We



Home Insert Page Layout Formulas Data Review View PDF Acrobat

Normal Page Layout Page Break Preview Custom Views Full Screen

Workbook Views Show/Hide

Ruler  Formula Bar

Gridlines  Headings

Message Bar

Zoom 100% Zoom to Selection

New Window Arrange All Freeze Panes Hide Unhide

View Side by Side Synchronous Scrolling Reset Window Position

Save Workspace Switch Windows

Macros

D14 Çatalhöyük Zoarchaeology

	A	B	C	D	H
1	Open Context URI	Item label	Project URI	Project name	Context (3
2	http://opencontext.org/subjects/E93B0801-C1F	15144.F1	http://opencontext.org/projects/1B42	Çatalhöyük	ound We
3	http://opencontext.org/subjects/1E85F957-C78	15144.F11	http://opencontext.org/projects/1B42	Çatalhöyük	ound We
4	http://opencontext.org/subjects/2B536F1D-494	15144.F2	http://opencontext.org/projects/1B42	Çatalhöyük	ound We
5	http://opencontext.org/subjects/321A7C3E-C05	15144.F3	http://opencontext.org/projects/1B42	Çatalhöyük	ound We
6	http://opencontext.org/subjects/BB3DFD89-EA	15144.F4	http://opencontext.org/projects/1B42	Çatalhöyük	ound We
7	http://opencontext.org/subjects/FE9AD352-886	15144.F5	http://opencontext.org/projects/1B42	Çatalhöyük	ound We
8	http://opencontext.org/subjects/E0A49E6C-124	15144.F6	http://opencontext.org/projects/1B42	Çatalhöyük	ound We
9	http://opencontext.org/subjects/B81D0A45-08	15144.F7	http://opencontext.org/projects/1B42	Çatalhöyük	ound We
10	http://opencontext.org/subjects/FED5FF1C-0DA	15144.F8	http://opencontext.org/projects/1B42	Çatalhöyük	ound We
11	http://opencontext.org/subjects/7865EA14-652	15160.F1	http://opencontext.org/projects/1B42	Çatalhöyük	ound We
12	http://opencontext.org/subjects/4F3B9A16-A3E	15160.F10	http://opencontext.org/projects/1B42	Çatalhöyük	ound We
13	http://opencontext.org/subjects/E4C88730-569	15160.F100	http://opencontext.org/projects/1B42	Çatalhöyük	ound We
14	http://opencontext.org/subjects/3D0CCD9D-03	15160.F101	http://opencontext.org/projects/1B42	Çatalhöyük	ound We
15	http://opencontext.org/subjects/9917C5C3-62E	15160.F102	http://opencontext.org/projects/1B42	Çatalhöyük	ound We
16	http://opencontext.org/subjects/BB97AF04-07E	15160.F103	http://opencontext.org/projects/1B42	Çatalhöyük	ound We
17	http://opencontext.org/subjects/57BBFF8A-1A7	15160.F104	http://opencontext.org/projects/1B42	Çatalhöyük	ound We
18	http://opencontext.org/subjects/9A4DE123-CA	15160.F105	http://opencontext.org/projects/1B42	Çatalhöyük	ound We
19	http://opencontext.org/subjects/25F21C15-E44	15160.F106	http://opencontext.org/projects/1B42	Çatalhöyük	ound We
20	http://opencontext.org/subjects/3869D3CE-AF5	15160.F107	http://opencontext.org/projects/1B42	Çatalhöyük	ound We
21	http://opencontext.org/subjects/761A31FF-933	15160.F108	http://opencontext.org/projects/1B42	Çatalhöyük	ound We
22	http://opencontext.org/subjects/08EF979D-FAF	15160.F109	http://opencontext.org/projects/1B42	Çatalhöyük	ound We
23	http://opencontext.org/subjects/D37E8EFD-DF	15160.F11	http://opencontext.org/projects/1B42	Çatalhöyük	ound We
24	http://opencontext.org/subjects/2E38570B-555	15160.F110	http://opencontext.org/projects/1B42	Çatalhöyük	ound We
25	http://opencontext.org/subjects/5E93CFDD-E5	15160.F111	http://opencontext.org/projects/1B42	Çatalhöyük	ound We
26	http://opencontext.org/subjects/9DEF875E-362	15160.F112	http://opencontext.org/projects/1B42	Çatalhöyük	ound We
27	http://opencontext.org/subjects/3342AB03-A9E	15160.F12	http://opencontext.org/projects/1B42	Çatalhöyük	Mound We
28	http://opencontext.org/subjects/F2C973D8-872	15160.F120	http://opencontext.org/projects/1B42	Çatalhöyük Zoarchaeology	Mound We
29	http://opencontext.org/subjects/208D2BC2-04F	15160.F13	http://opencontext.org/projects/1B42	Çatalhöyük Zoarchaeology	Mound We
30	http://opencontext.org/subjects/6B39054F-477	15160.F14	http://opencontext.org/projects/1B42	Çatalhöyük Zoarchaeology	Mound We

## XML to CSV:

- Scripting (PHP) with XPath to convert many XML docs to CSV records
- Many nodes ignored, not mapped to CSV
- But! Most users use Excel, want CSV
- “Primary keys” in CSV data are Web URIs, can link back to more expressive XML representations

## Browse and Filter

Click on one of the links below to further limit your view of *analytic data* in Open Context.

Or, type a search term in the box:



Sort facets alphabetically: A,B,C ↓

- EOL linked Biological Taxa
  - Select Multiple
    - [Bos taurus](#) Linnaeus, 1758 (Encyclopedia of Life) 11835
    - [Bos primigenius](#) (Encyclopedia of Life) 290
- Descriptive Properties
  - Select Multiple
    - [Element](#) 16329
    - [Taxon](#) 13763
    - [Symmetry](#) 10175
    - [Certainty](#) 7733
    - [Weathering](#) 6010
    - [Recovery](#) 5449
    - [Validity](#) 5449
    - [Side](#) 5243
    - [Species](#) 5005
    - [Class](#) 4614
    - [Fragment Size](#) 3628
    - [Element Name](#) 3601
  - More...
- Context
  - Select Multiple
    - [Çatalhöyük](#) 6438
    - [İlipınar](#) 3601
    - [Hazor](#) 2056
    - [Domuztepe](#) 2014

Open Context currently has **21252** items, filtered by the following criteria:

- (1) Contained in: [Turkey](#) OR [Iran](#) OR [Israel](#) OR [Jordan](#)
- (2) Biological Taxa: [Bos \(Cattle, oxen\)](#) (from *Encyclopedia of Life*); includes more specific sub-taxa
- (3) Geo-spatial Tile: 1 (Zoom out a tile level)

Last Updated: *September 3, 2013, 1:44 am*

[View a map summary](#)

## Services (not just data)

- Atom
- JSON
- GeoJSON
- KML



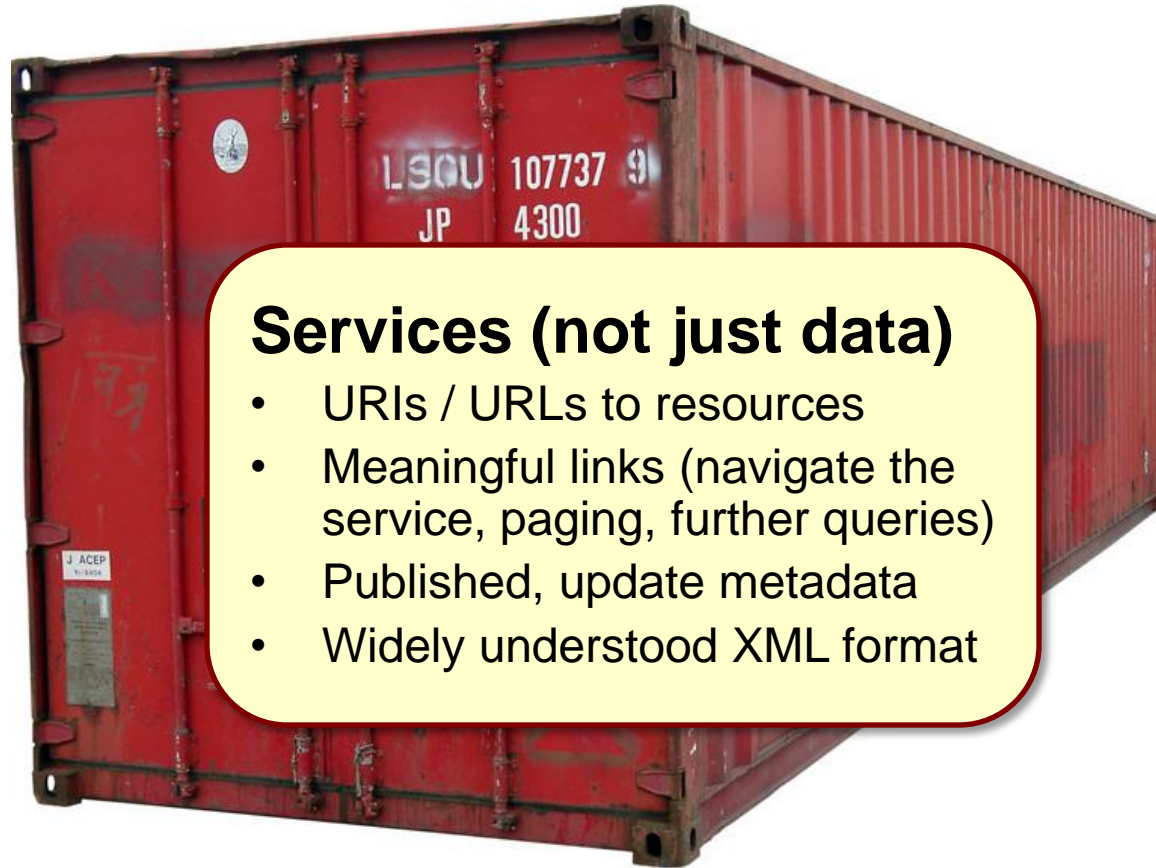
# Atom: Standard Container

(After Wilde)





# Atom: Standard Container



## **Services (not just data)**

- URIs / URLs to resources
- Meaningful links (navigate the service, paging, further queries)
- Published, update metadata
- Widely understood XML format





One does not simply share usable data...

Image Credit: Copyright Newline Cinema

# Pragmatism

## “Open Data” Starting Points

- Different formats good for different purposes, XML great but not ideal for all uses / communities
- HTTP URIs (Often a good way to identify things)
- REST(ish). Services provide links to follow to get data. Erik can explain more...



**Noah Webster**

Image Credit: “Nostri-Imago” via Flickr (CC-BY)  
<http://www.flickr.com/photos/nostri-imago/3429417174>