

Mashups with the Google Maps API Part II

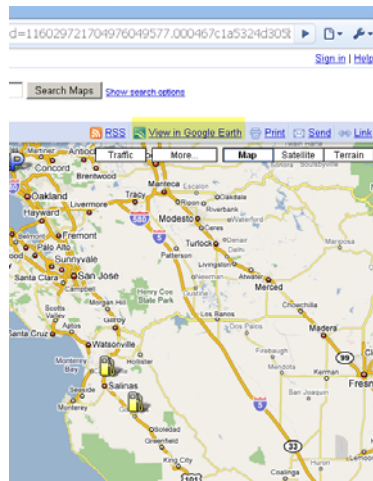
Raymond Yee (yee@berkeley.edu)

April 22, 2009

Google My Maps: My Trip to SLO

- <http://maps.google.com/maps/ms?ie=UTF8&hl=en&msa=0&msid=116029721704976049577.000467c1a5324d305b331&ll=36.531709,-121.019897&spn=3.795648,5.603027&z=8>
- (aka <http://bit.ly/ybr8x>)
- Compare to [http://mapki.com/wiki/Google Map Parameters](http://mapki.com/wiki/Google_Map_Parameters) (<http://bit.ly/MgUVX>)

Google My Map KML



- KML:
<http://maps.google.com/maps/ms?ie=UTF8&hl=en&msa=0&output=nl&msid=116029721704976049577.000467c1a5324d305b331>
- Change nl->kml

Look at the KML from My Map

- Look at
<http://maps.google.com/maps/ms?ie=UTF8&hl=en&msa=0&output=kml&msid=116029721704976049577.000467c1a5324d305b331>
- Validate it: <http://bit.ly/oDqNt> using feedvalidator.org
- Feed it to Gmap (in a recursive fashion):
<http://bit.ly/2Ha1s>

How to use Google Map to read KML

- The Google **AJAX APIs Playground** playground is very helpful

http://code.google.com/apis/ajax/playground/?exp=maps#map_geoxml_kml

Using Ajax APIs Playground

The screenshot displays the Google AJAX APIs Playground interface. On the left, a sidebar lists various map samples, with 'Map Geoxml KML' selected. The main area is divided into two sections: 'Full Code' and 'Output'. The 'Full Code' section contains the following JavaScript code:

```

1 var map;
2 var geoXml;
3 var toggleState = 1;
4
5 function initialize() {
6   IE = (navigator.userAgent.indexOf("MSIE") > -1);
7   geoXml = new GeoXml("http://maps.google.com/maps/?
8   &hl=fr&ll=45.764014,4.835847&spn=11.029721704971049777,0004671a3324430b31");
9   map = new GMap2(document.getElementById("map_canvas"));
10  map.setCenter(new GLatLng(45.511709, -101.019097), 9);
11  map.addControl(new GMapControl());
12  map.addOverlay(geoXml);
13  map.addOverlay(map);
14 }
15
16 function toggleByDel() {
17   if (toggleState == 1) {
18     map.removeOverlay(geoXml);
19     toggleState = 0;
20   }
  
```

The 'Output' section shows a map of the San Francisco Bay Area with a KML overlay. A callout box for 'Acme Chevron' is visible, with the text 'Where we got gas on the last push into the Bay Area'. The map also shows a street view pegman and various map controls.

Copy and Paste Code to Embed KML

- Use your helloworld.html/whitehouse.html as a template
- Replace code in between <script></script> with code from playground
- Voilà:
http://people.ischool.berkeley.edu/~rdhyee/w eb-spring09/slo_mymap.html

GeoRSS for a user's geotagged photos

- You can get a geo-rss feed for a user:
- <http://api.flickr.com/services/feeds/geo/?id={user-nsid}&lang=en-us&format=feed-georss>
- E.g.,
<http://api.flickr.com/services/feeds/geo/?id=48600101146@N01&lang=en-us&format=feed-georss>

GeoRSS for a group's geotagged photos

- <http://api.flickr.com/services/feeds/geo/?g={group-nsid}&lang=en-us&format=feed-georss>
- E.g.,
- <http://api.flickr.com/services/feeds/geo/?g=34427469792@N01&lang=en-us&format=feed-georss> for the Flickr Central Group (<http://www.flickr.com/groups/central/>)

Rendering GeoRSS on GMap

- See http://code.google.com/apis/ajax/playground/#map_geoxml_rss
- Use the URL for your geotagged photos and copy and paste into the sample code to generate something like <http://people.ischool.berkeley.edu/~rdhyee/web-spring09/myflickrgeotagged.html>

Mashing up My Map + Flickr

- How to put both the Google My Map and the Flickr Feed on the same map?